

Installation Guide

Your responsibilities as the customer:

PRIOR TO DELIVERY

- **Utilities must be in the right place and ready to go.**
 - Please reference your site plan to ensure water and electrical supplies, as well as the drains, are in the correct locations.
- In some situations, we have to notch the frame of the CRYOTherm to accommodate utilities [fig. 1]. In these situations, the **utilities MUST be placed correctly**, or installation will have to be paused until they are re-routed.

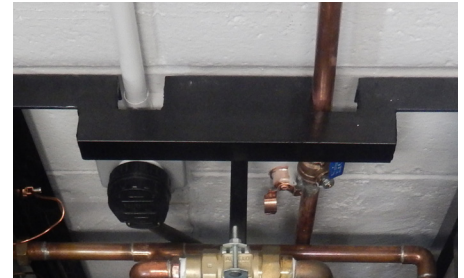


fig. 1 - A notched frame, made to accommodate electrical and water supplies.

Call us at 740-374-3412 if you have any questions.

ON THE DAY OF DELIVERY

- **You will need to provide laborers** to help with installation.
 - We provide installation supervision, but you will need to supply laborers to do the heavy lifting.
 - How many people you need depends on the size of your unit.
- You will also need a **plumber** on hand on installation day
 - They will need to make the final water connection between the wall and the unit.
- You may be asked to provide a forklift to help with installation, depending on your situation. We may also ask you to provide other supplies, such as:
 - Pallet jack
 - Fork extensions

Installation Guide

Provided by Grimm Scientific

PRIOR TO DELIVERY

- Before your *CRYOTherm* enters production, we will ensure your unit fits your space and can be moved through doorways.
 - It is essential that you let us know if there have been any changes to the site plan.

ON THE DAY OF DELIVERY

- We will deliver the *CRYOTherm* to your location.
- A factory trained representative will **supervise** installation.
- We will **test** the unit to ensure proper operation.
- We will provide a **full in-service** for your staff once testing is complete.

Installation Guide

The Installation Process

1. DELIVERY

- We will bring the *CRYOTherm* on a truck. We will schedule delivery with you in advance so you can be ready.

2. UNLOADING

- Depending on the size of the *CRYOTherm*, we will use either a forklift or the lift gate to lower the tanks from the truck. [fig. 2]
 - If we need you to provide a forklift, we will let you know in advance.
 - We can also use a dock, if one is available.
- Once it is out of the truck, the *CRYOTherm* will be lifted onto its back with the help of 4-6 laborers. [fig. 3]
- The *CRYOTherm* can then be rolled with the attached casters.



fig. 2 - Unloading with a forklift



fig. 3 - Raising the *CRYOTherm* onto its casters

3. MOVING

- With the help of the laborers, our factory representative will steer the *CRYOTherm* to its proper location. [fig. 4]
 - Some sites may also require some lifting with the forklift.
 - The *CRYOTherm* is designed to roll through standard doorways.



fig. 4 - Rolling into place, through standard doorways

Installation Guide

4. LOWERING

- Once we have reached the hydrotherapy room, the casters will be removed, and the *CRYOTherm* will be lowered down to the floor by the laborers. [fig. 5]
 - We will provide the equipment; we will just need manpower.
 - Our factory representative will supervise.



fig. 5 - Lowering the *CRYOTherm*

5. LEVELING

- With the help of the 4-6 laborers, our representative will get the tank sections set into place and level according to the site plan. [fig. 6]
 - We may need a pallet jack to complete this step.
- This entire process shouldn't take more than a couple hours, depending on the size of the *CRYOTherm* and the number of sections.



fig. 6 - Leveling the *CRYOTherm*

6. UTILITIES

- The **electrical outlet should be pre-wired** so the unit can be plugged in to run.
 - Our representative will need to document the location and proper operation of the GFCI breaker.
 - If the outlet is wired and active, we should not need an electrician, but it's nice to have one nearby in case we encounter issues.
- Once the *CRYOTherm* is set in place, a **plumber** will need to make the final water connection between the wall and the unit.
 - IMPORTANT: We prefer a ball valve at the wall to allow the water to be shut off for service.

Installation Guide

- If the *CRYOTherm* is made of two sections, our representative will reconnect the electrical, water, and refrigeration connections between the two tank sections.
 - It would be nice to have a person who can hang around most of the day to help our representative out when needed.



fig. 7 - A two-section unit

7. START UP

- We will run the *CRYOTherm* overnight and test it the following morning.
- Our factory representative will also perform the in-service with the athletic training staff on the second day.



fig. 8 - Installation Complete!